

T-46 WIRTH GH 2000 EG-DC

TECHNICAL OVERVIEW

Rating	2,000 HP	1,490 kW
Hook load	1,124,000 lbs @14 lines	510 t
Drilling depth theoretical	23,000 ft	Approx. 7,000 m

Refurbished API CAT IV in 2012

MAST

Type	Dreco M 14730-13307, cantilever	
Height (incl. extension)	161 ft	49 m
Hook load	1,124,000 lbs @14 lines	510 t

SUBSTRUCTURE

Type	Dreco slingshot	
Height	30 ft	9.1 m
Casing load	1,124,000 lbs	510 t
Setback load	700,000 lbs	318 t

DRAWWORKS

Type	Wirth GH 2000 EG-DC	
Horsepower rating	2,000 HP	1,490 kW
Max. line pull	100,000 lbs	45 t
Drilling line diameter	1 1/2"	38 mm
Auxiliary brake	Baylor 6032	

TOP DRIVE

Type	Bentec TD-750-HT	
Capacity	1,500,000 lbs	680 t
Torque	73,760 ft.lbs	100,000 Nm

ROTARY TABLE

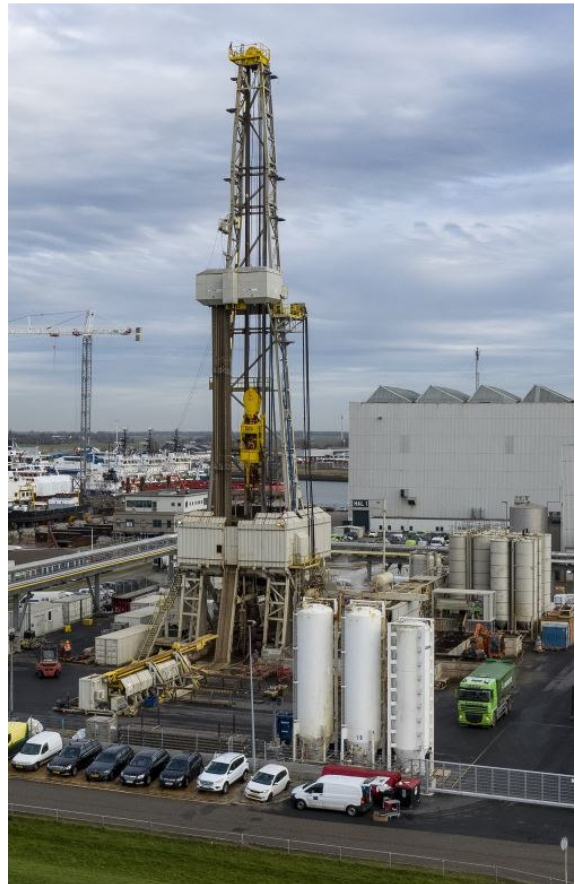
Type	National C-375	
Table opening	37 1/2"	952.5 mm

IRON ROUGHNECK

Type	Varco AR3200	
-------------	--------------	--

DRIVE GROUP

Engine type	Caterpillar 3512B	
Horsepower rating	5 x 1,757 HP	1,310 kW
Generator type	Leroy Somer	
Generator rating	5 x 1,780 kVA	
SCR-Unit	Bentec SCR	



MUD SYSTEM

Mud pump type	Wirth TPK-2000	
Horsepower rating	3 x 2,000 HP	
Standpipe pressure	7,500 psi	517 bar
Active mud system	786 bbl, round tank system	125 m ³
Reserve mud system	940 bbl, 4 silos	153 m ³
Shale shaker type	3 x Thule VSM 300	elliptical

BOP EQUIPMENT

Depending on clients requirements	All specified acc. to API 16A	
--	-------------------------------	--

ADDITIONAL INFORMATION

Soundproofed Equipment:

Rig Floor, Fingerboard, Drawworks, Generators, Mud Pumps, Shales Shakers, Helical gear for Top Drive

Drawworks features:

Disc brake, 4-Q System with Joystick operation, Anti Collision System (ACS), Automatic Driller System

Power Supply:

Diesel Engine Driven or/and Grid-Power Supply with Transformer

Certification: API, BVoT, SodM (Safety Case, RiGG)

Miscellaneous:

- +veDRILL™ TurnRight; optiTORQUE, optiSLIDE & rigCARE
- Mechanized Catwalk System; Bentec MCS
- Mechanized Derrickman System; Bentec MDS
- Skidding System
- Closed and covered Round Tank System